



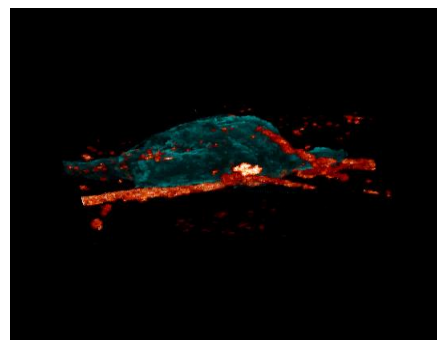
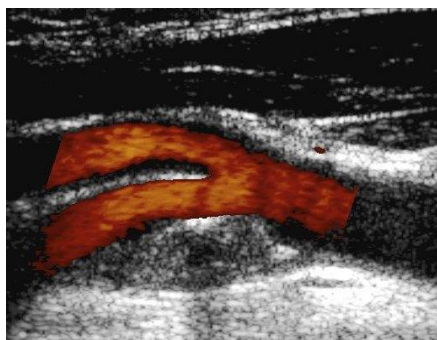
WESSEX SCIENTIFIC  
[www.wessexscientific.com](http://www.wessexscientific.com)

# VASCULAR ULTRASOUND COURSE

SEPTEMBER 29<sup>TH</sup> – 30<sup>TH</sup> 2016

NOVOTEL HOTEL,  
MANCHESTER, UK

Programme and on-line registration now available on:  
[www.wessexscientific.com](http://www.wessexscientific.com)



ROYAL COLLEGE OF RADIOLOGISTS  
ACCREDITATION: 10 CPD POINTS



WESSEX SCIENTIFIC

## VASCULAR ULTRASOUND COURSE

This is an intensive 2-day course/workshop on the application of duplex, pulsed wave, colour and power Doppler techniques in the investigation of the abdominal, extra and intra-cranial and peripheral vasculature. The course is a combination of lectures, demonstrations and workshop sessions and is designed to cover both the basic principles of these techniques and a review of the current state of ultrasound arteriography and venography.

Each clinical lecture will cover the following topics:

- Normal vasculature and variants
  - Examination protocols
  - Diagnostic criteria
  - Case histories
  - Pitfalls in interpretation
- Clinical applications literature will be available to the delegates.

## ACCOMMODATION

Special B & B accommodation rates are available for the Novotel Hotel. To contact the hotel: tel: +44 (0)161 235 2200; email: [H3145-RM@accor.com](mailto:H3145-RM@accor.com) or the website [www.novotel.com/gb/hotel-3145-novotel-manchester-centre/index.shtml](http://www.novotel.com/gb/hotel-3145-novotel-manchester-centre/index.shtml)

## ADMINISTRATION CENTRE

For further information please contact: The Secretariat, [info@wessexscientific.com](mailto:info@wessexscientific.com)

## EXHIBITION/PRACTICAL 'HANDS-ON' SESSIONS

An exhibition/workshop of the latest ultrasound systems, will be held throughout each day. The workshops will be available for delegates to gain supervised training and practical experience in the use of Doppler ultrasound techniques in scheduled sessions within the programme.

## SOCIAL EVENTS

Delegates are invited to the Reception and Course Dinner at Yang Sing Restaurant on the evening of 29<sup>th</sup> September, 2016.



## VASCULAR ULTRASOUND COURSE

### Provisional Scientific Programme

#### Thursday 29<sup>th</sup> September 2016

##### Basic principles/Extra- and intracranial vessels

09.00	Welcome and Introduction	
09.05	Basic principles of Doppler ultrasound.	K.Humphries
09.45	Extracranial vasculature	T. Hartshorne
10.15	Intracranial vasculature	T.Hartshorne
10.30	Tea/coffee	
10.45	Atherosclerotic plaque composition and dynamics	N. Pugh
11.15	<b>Practical Session I: Extracranial vasculature</b>	
12.30	Lunch	

##### Abdominal & peripheral arteries

13.30	Lower Limb arteries	K.Humphries
14.00	Aorta and main branches	C. Deane
14.15	Tea/Coffee	
14.30	Haemodialysis	C. Deane
15.00	Stent and graft surveillance	T. Hartshorne
15.30	<b>Practical Session III: Peripheral vessels- arterial.</b>	
19.00	<b>Course Dinner</b>	

#### Friday 30<sup>th</sup> September 2016

##### Special Topics: Venous

09.00	Lower limb deep venous system	D. Goss
09.30	Superficial venous system	D. Goss
10.00	Upper limb vasculature	N.Pugh
10.30	Tea/refreshments	
10.45	<b>Practical Session II: Peripheral vessels - venous</b>	

##### General

13.15	Ultrasound imaging in surgical procedures	A.Tiwari
13.45	Doppler Ultrasound:artefacts and errors	K Humphries
14.15	Tea/ <b>Practical Session IV: Open</b>	
16.00	Meeting closes.	



## VASCULAR ULTRASOUND COURSE

### Faculty

Dr. Colin Deane	Dept. of Medical Engineering & Physics, King's College Hospital, Denmark Hill, London SR5 9RS.
Dr. David Goss	Dept. of Medical Engineering & Physics, King's College Hospital, Denmark Hill, London SR5 9RS.
Mr. Tim Hartshorne	Vascular Laboratory Royal Infirmary, Infirmary Square Leicester LE1 5WW
Mr. Keith Humphries	Imaging Sciences Department, Hammersmith Hospital Campus, Imperial College, Du Cane Road, London W12 0HS
Dr Neil Pugh	Medical Physics and Engineering Dept. University Hospital of Wales, Heath Park, Cardiff.
Mr. Alok Tiwari	Vascular Surgery Queen Elizabeth Hospital, Edgbaston, Birmingham B15 2TH