

# Renal Failure and Haemodialysis Study Day:

## A multidisciplinary team perspective

### Description

Following the success of the first event last year, this collaborative study day will be delivered by the University of the West of England and North Bristol NHS Trust.

The course is aimed at a range of health professionals, involved either in primary or secondary care. The course will benefit anyone new to renal disease, those seeking to set up a service and professionals currently working in the area who would like more detailed knowledge.

A morning of theory will cover a broad range of topics from the perspective of various health professionals involved in the management of renal disease at North Bristol NHS Trust. The afternoon will be dedicated to practical, interactive demonstrations.

North Bristol NHS Trust is one of the largest centres in the South West of England involved in renal failure and haemodialysis. Speakers from NBT will include consultants from radiology, nephrology and surgery, renal access specialist nurses and clinical vascular scientists.

### Details & Contact

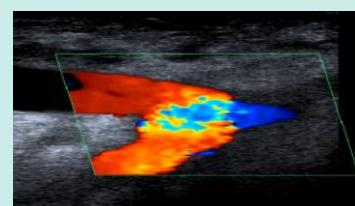
**Date:** Friday 6<sup>th</sup> March 2020  
**Time:** 09:00-16:30 (registration from 08:45)  
**Location:** Room 1F21, UWE Bristol, Glenside Campus, Blackberry Hill, Bristol, BS16 1DD  
**Cost:** £125  
**Tel:** +44 (0)117 32 81158  
**Email:** [has.studydays@uwe.ac.uk](mailto:has.studydays@uwe.ac.uk)  
**Twitter:** @UWEhasCPD

**Web link:** <https://courses.uwe.ac.uk/Z51000107/renal-failure-and-haemodialysis-access>

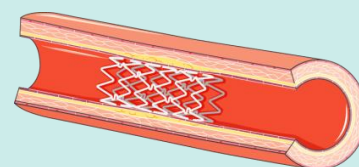
### Formation & Access



### Ultrasound assessment



### Intervention



### Patient perspectives



### Cannulation Workshop



# Renal Failure and Haemodialysis Study Day



North Bristol  
NHS Trust

6<sup>th</sup> March 2020  
Course Programme  
Room 1F21, Glenside campus, UWE



Timings	Content
0845-0900	• <b>Registration</b>
0900-0910	• <b>Welcome</b> <i>Louise Fearnside / Antonio Sassano</i>
0910-0930	• <b>Renal failure &amp; aetiology</b> <i>Dr Mohammed Al-Talib, Renal Clinical Fellow</i>
0940-1010	• <b>Renal replacement therapies and haemodialysis</b> <i>Simon Daniel, Renal Access Specialist Nurse</i>
1020-1040	• <b>Patient perspective</b> <i>John Gardner</i>
1040-1110	• <b>Refreshments</b>
1110-1130	• <b>Ultrasound Overview</b> <i>Louise Fearnside, Clinical Vascular Scientist</i>
1140-1210	• <b>Radiological Intervention</b> <i>Dr Graham Collin, Consultant Radiologist</i>
1220-1250	• <b>HD Access and Formation</b> <i>Mr Shakeeb Khan, Consultant Renal Transplant and General Surgeon</i>
1300-1345	• <b>Lunch</b>
1350-1410	• <b>Ultrasound Assessment</b> <i>William Owen, Clinical Vascular Scientist</i>
1415-1600	• <b>Practical session (with refreshment break)</b>
1615	• <b>Close</b>



Exceptional healthcare, personally delivered